



### South Academy Highlands: Pre-Construction

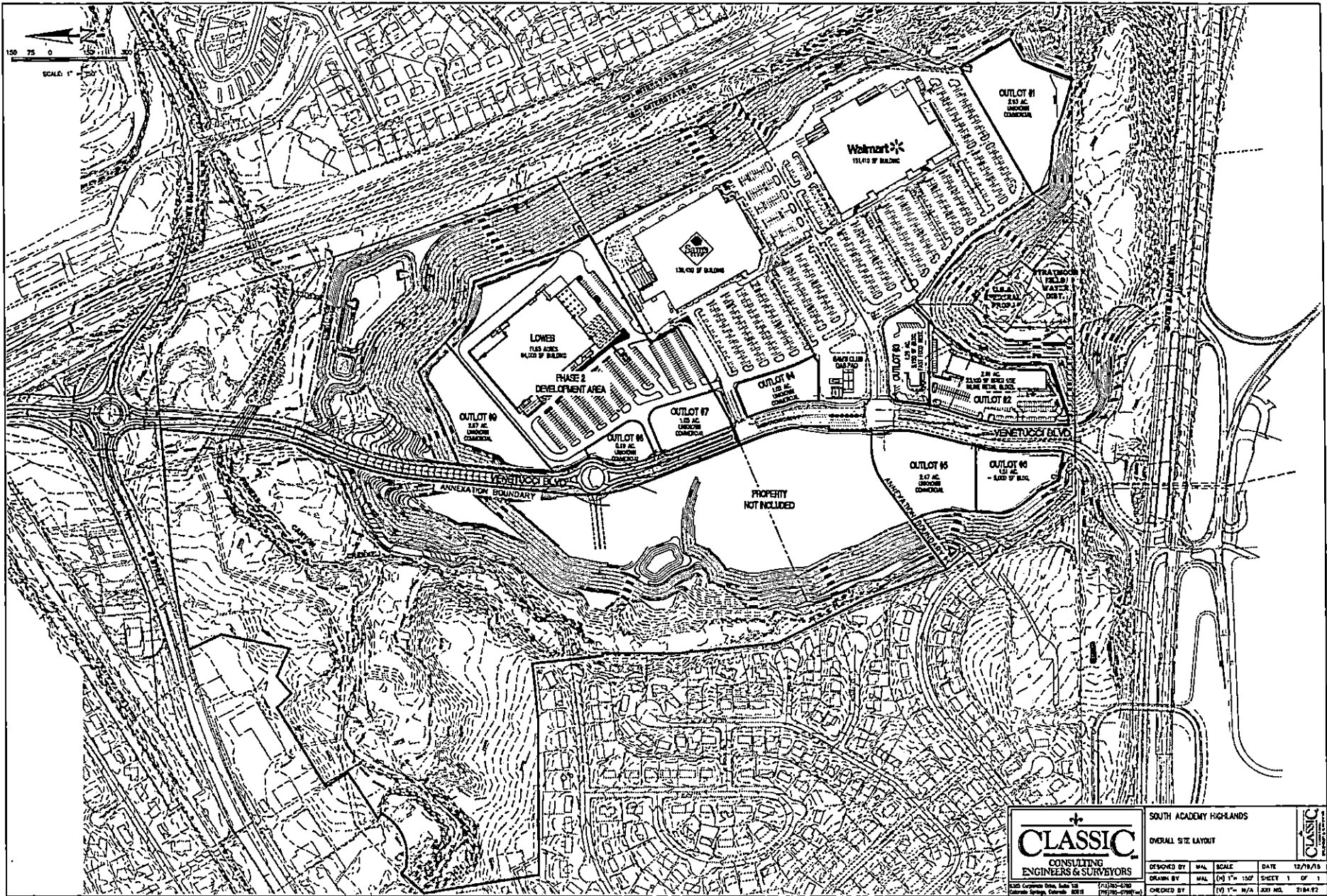


South Academy Highlands Imagery Source: NAIP Imagery 2013



Date: 3/17/2016

Document Path: S:\GIS\arcswrap\_mxd\Nrc09\_6\2016\Economic\_Development\SouthAcademyHighlands\_PreConstruction.mxd  
 Map for informational use only. No legal use intended.



2015/12/15 11:52 AM 12/15/15 11:52 AM 12/15/15 11:52 AM

<b>CLASSIC</b> CONSULTING ENGINEERS & SURVEYORS <small>1200 Corporate Plaza, Suite 120          Columbus Springs, Colorado 80521          (719) 885-2700          (719) 885-2700 (fax)</small>		SOUTH ACADEMY HIGHLANDS OVERALL SITE LAYOUT	
		DESIGNED BY MAL	SCALE (10" 1" = 150')
CHECKED BY (10" 1" = 150') M/A		JOB NO. 2104-02	



# Department of Revenue



Home Sales Tax Rates

Help

### CITY AND COUNTY TAX RATES

Select a City

- OR -

Select a County

The state sales tax rate is 2.9%. This application will display only those cities that have a sales tax, and does not have full information on local exemptions or use tax.

[Click here for a complete list of all sales and use tax rates.](#)

#### FOUNTAIN:

The city sales tax rate is 3.75% and the use tax rate is 2.0%. Fountain is in El Paso County.

#### EL PASO COUNTY:

The county sales tax rate is 1.23%. The Pikes Peak Rural Transportation Authority imposes a sales tax of 1.0% in the El Paso county limits except the municipalities of Calhan, Monument, Palmer Lake and the Commercial Aeronautical Zone in the City of Colorado Springs. This transportation authority sales tax is reported on the sales tax return in the special district column.

State Website

Revenue Website

Taxation Website

Privacy and Security Policy

Contact Us

Borriello Brothers Pizza Fountain  
5180 Fontaine Blvd Fountain, CO 80817  
4/4/16 11:25 AM

Bag 2FTN2 Tab: Don  
CarryOut Check: 710

---

1 16" Ultra Thin @18.00	\$18.00
1 16in UT 5Boro @20.00	\$20.00

---

Sub-Total	\$38.00
Sales Tax	7.88 <sup>76</sup> \$2.99

---

Total	\$40.99
-------	---------

---

Payments	
Visa ***9706	\$40.99

---

Amount Due	\$0.00
------------	--------

Thank you!  
Please come again!  
(719)884-2020 ex. 3